

# Financial Counterparts Monitor

April 2024

Credit Benchmark's Financial Counterparts Monitor is based on the contributed credit risk estimates from 40+ global financial institutions and shows the changing creditworthiness of different groups of financial counterparts. Credit Benchmark has a Credit Consensus Rating and accompanying detailed analytics for 100,000+ legal entities globally which are available to clients under license, via our Web App, Excel add-in, API or flat-file download.

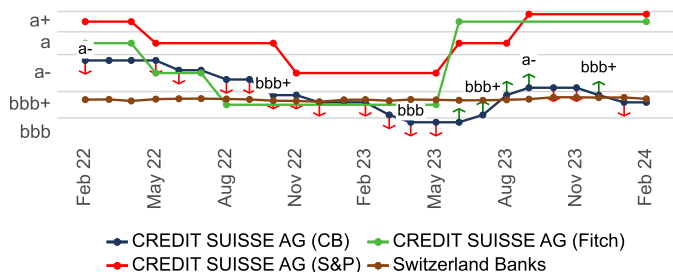
The upper table summarizes the number of entities per category with a Credit Consensus Rating, their month-on-month changes in credit distribution, and their transitioning credit quality. Further below is an example of the detailed analytics that are available at an individual entity level.

To understand the creditworthiness of industries, sectors and entities that matter to you and be alerted to their changing Credit Consensus Ratings, please email [info@creditbenchmark.com](mailto:info@creditbenchmark.com).

Category	Total	% Publicly Rated <sup>1</sup>	Credit Consensus Distribution - MoM Change <sup>2</sup>							Credit Transition <sup>3</sup>			
			aaa	aa	a	bbb	bb	b	c	↑Imprv	↓Dtrg	Imprv:Dtrg	IG to HY <sup>5</sup>
<b>Banks</b>													
Central Banks	99	6%	4	-4	0	0	-1	1	0	10%	6%	1.7 : 1	0
Globally Systemically Important Banks	30	100%	0	0	0	0	0	0	0	3%	13%	1 : 4.0	0
Banks - Global	2,217	43%	1	-3	12	-17	9	-2	0	4%	4%	1 : 1.1	15
Banks - North America	293	46%	0	0	0	1	-1	0	0	4%	8%	1 : 1.9	1
Banks - Latin America	190	47%	0	0	1	-2	0	1	0	6%	4%	1.7 : 1	2
Banks - EMEA	1,191	41%	1	-2	8	-9	5	-3	0	4%	4%	1 : 1	6
Banks - APAC	543	45%	0	-1	3	-7	5	0	0	2%	3%	1 : 1.4	6
<b>Intermediaries</b>													
Central Clearing Counterparts (CCP)	44	24%	0	-1	1	0	0	0	0	5%	0%	-	0
CCP Members	1,114	44%	2	-5	9	-6	1	-1	0	7%	5%	1.2 : 1	2
Prime Brokers	24	92%	0	0	0	-1	1	0	0	4%	8%	1 : 2.0	1
Broker Dealers	280	41%	0	1	0	-2	1	0	0	7%	4%	1.7 : 1	1
Custodians and Sub Custodians	150	65%	0	-1	1	0	0	0	0	6%	7%	1 : 1.1	0
<b>Buy Side Managers</b>													
Asset Managers	992	8%	0	0	-4	6	-1	-1	0	3%	3%	1.2 : 1	1
Insurance Companies	1,773	15%	0	4	-1	-5	4	-2	0	4%	3%	1.6 : 1	5
<b>Buy Side Owners</b>													
Mutual Funds	27,747	0%	0	71	-31	-45	4	1	0	1%	1%	1.2 : 1	10
Pension Funds	1,967	0%	0	34	-32	2	-4	0	0	3%	3%	1 : 1	1
Sovereign Wealth Funds	37	8%	0	0	0	0	0	0	0	11%	5%	2.0 : 1	0

## Sample Financial - CREDIT SUISSE AG - Consensus Analytics

Credit Benchmark can provide a Credit Consensus Rating for 100,000+ legal entities. Consensus metrics for CREDIT SUISSE AG are displayed below to showcase the level of detail we can provide on any of these 100,000+ entities. CREDIT SUISSE AG is categorised as Banks within the above aggregated analytics.



Credit Consensus Rating <sup>6</sup>	bbb+	
Distribution <sup>7</sup>	aa	to bb
Contributor Count <sup>8</sup>	24	
Agreement Indicator <sup>9</sup>	Low	
Dispersion <sup>9</sup>	0	3
Outlier Indicator <sup>10</sup>	Pessimistic	
Skew Direction <sup>10</sup>	-3	3
	3.9	

<sup>1</sup> % Publicly Rated: Percentage of entities which also hold a public rating from a major credit rating agency.

<sup>2</sup> Credit Consensus Distribution - MoM Change: The number of entities moving into or out of the given rating category since last update.

<sup>3</sup> Credit Transition: Assess the month over month observation-level net percentage of improvements and deteriorations.

<sup>4</sup> Ratio: Ratio of Improvements and Deteriorations calculated as Improvements : Deteriorations.

<sup>5</sup> IG to HY Migrations: The number of entities that have migrated from investment-grade to high-yield since last update.

<sup>6</sup> Credit Consensus Rating: Average Rating across all contributing financial institutions.

<sup>7</sup> Distribution: Best contributed rating to worst contributed rating.

<sup>8</sup> Contributor Count: Total number of contributors ("Min" indicates 3-4 contributors)

<sup>9</sup> Agreement Indicator & Dispersion: Both measure how closely packed the consensus range is.

<sup>10</sup> Outlier Indicator & Skew Direction: How significant the outliers within consensus are.

Note: Data collected and released at end of month takes into account credit risk estimates as at end of previous month.